

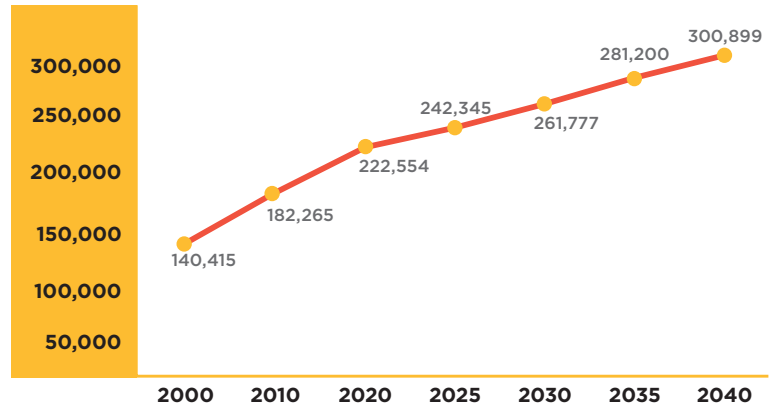
BALDWIN BY THE NUMBERS

POPULATION 2012-2016



= approximately 10,000 U.S. CENSUS BUREAU

POPULATION PROJECTIONS 2000-2040



THE UNIVERSITY OF ALABAMA CENTER FOR BUSINESS AND ECONOMIC RESEARCH

NOTEWORTHY

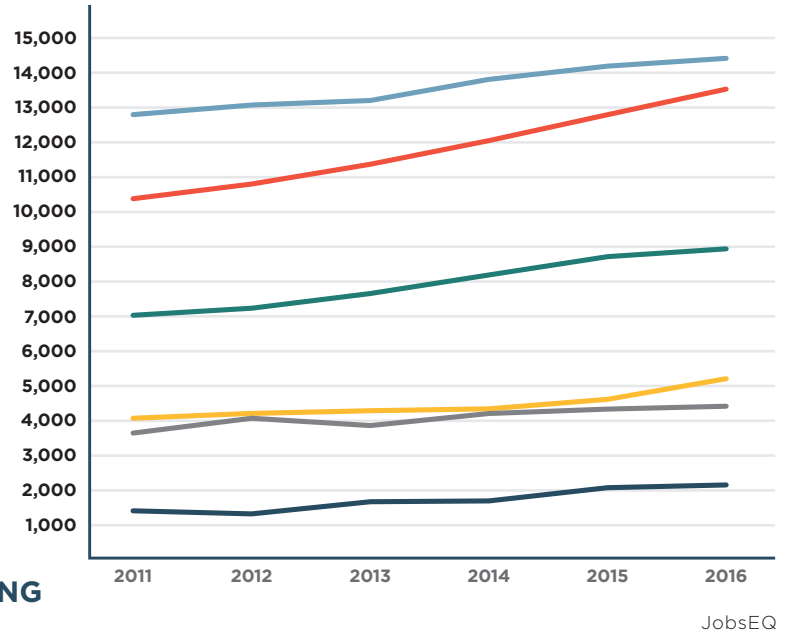
- ★ FASTEST GROWING COUNTY IN ALABAMA in 2016
- ★ LARGEST PROJECTED GROWTH among all Alabama MSAs
- ★ 500,000+ RESIDENTS in the Baldwin County labor shed
- ★ 4 OF THE TOP 5 FASTEST GROWING Alabama cities are in Baldwin County
- ★ Daphne became one of the 20 LARGEST CITIES IN ALABAMA in 2016

POPULATION BY MUNICIPALITY

MUNICIPALITY	2012	2013	2014	2015	2016	% CHANGE (2012-2016)
BAY MINETTE	8,635	8,911	9,064	9,144	9,312	7.8%
DAPHNE	22,825	23,496	24,342	24,886	25,913	13.5%
FAIRHOPE	16,466	17,311	18,047	18,721	19,421	17.9%
FOLEY	15,867	16,298	16,748	17,211	17,607	11.0%
GULF SHORES	10,823	11,054	11,287	11,487	11,689	8.0%
ORANGE BEACH	5,611	5,696	5,777	5,850	5,981	6.6%
ROBERTSDALE	5,538	5,654	5,762	5,893	5,990	8.2%
SPANISH FORT	7,318	7,588	7,791	8,064	8,327	13.8%

U.S. CENSUS BUREAU

TOTAL JOB GROWTH IN KEY INDUSTRY SECTORS



★ **16% TOTAL JOB GROWTH** from 2011 to 2016

★ **11% MANUFACTURING JOB GROWTH** from 2011 to 2016

★ **CONSISTENT ANNUAL JOB GROWTH OF 3-4%**

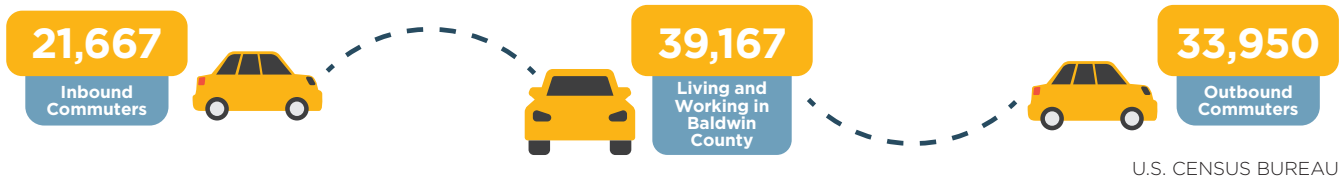
★ **48% TRANSPORTATION & MANUFACTURING JOB GROWTH** from 2011 to 2016

★ Baldwin County ranks in the **TOP 50 MSAs** in the U.S. for new job growth Bureau of Labor Statistics

COMMUTING PATTERNS

★ 75% of Baldwin County residents are willing to commute more than 20 minutes for a good job

★ Average travel time to work for Baldwin County labor shed - 24.4. minutes



U.S. CENSUS BUREAU

POPULATION GROWTH BY EDUCATION LEVEL 25 YEARS AND OVER

EDUCATION LEVEL	2010	2015	PERCENT CHANGE (2010-2015)
Less than 9th Grade	4,741	4,385	-7.5%
9th to 12th Grade	10,332	9,975	-3.5%
High School Graduate	36,346	39,431	8.5%
Some College, no degree	28,201	31,080	10.2%
Associate's Degree	9,239	12,420	34.4%
Bachelor's Degree	22,002	26,388	19.9%
Graduate or Professional Degree	10,576	13,322	26.0%

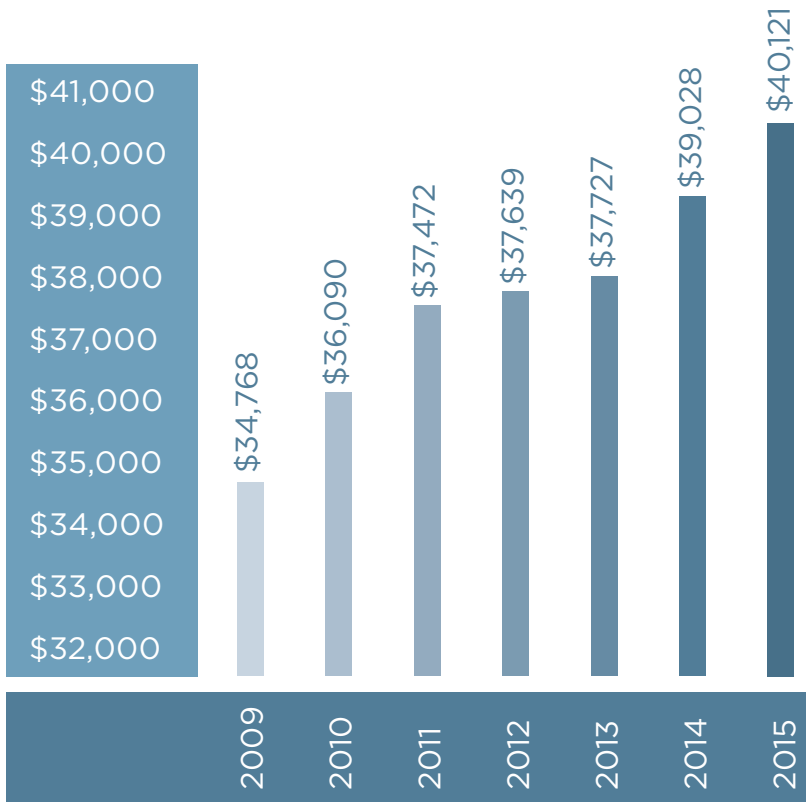
U.S. CENSUS BUREAU

★ **34.4% INCREASE** in number of residents with Associate's Degree from 2010 to 2015.

★ **24.7% INCREASE** in number of residents with Associate's Degree or higher from 2010 to 2015.

★ Of Baldwin County's net new residents, from 2010 to 2015, **85%** had at least some college education.

PER CAPITA INCOME



BUREAU OF ECONOMIC ANALYSIS

- ★ Baldwin County Per Capita Income now **OVER \$40,000**
- ★ **15% GROWTH** in Per Capita Income, since 2009

BALDWIN COUNTY ACCOLADES

- ★ Baldwin County ranks in the Bureau of Labor Statistics' **TOP 50 MSAs** in the U.S. for new job growth
- ★ SmartAsset names Baldwin County **#1 IN THE STATE OF ALABAMA** for Incoming Business Investment in 2016
- ★ Baldwin County ranks as one of NewGeography's **TOP 10 BEST SMALL MSAs** for job growth, in 2017
- ★ EMSI ranks Baldwin County **#1 IN THE STATE OF ALABAMA** for workforce "Talent Attraction"

COUNTY	POPULATION		RANKING	
	2010	2040	2010	2040
Jefferson	658,466	667,433	1	1
Madison	334,811	451,043	3	2
Mobile	412,992	431,909	2	3
Baldwin	182,265	300,899	7	4
Shelby	195,085	276,373	5	5
Tuscaloosa	194,656	246,892	6	6
Montgomery	229,363	229,647	4	7
Lee	140,247	211,019	8	8
Limestone	82,782	129,617	16	9
Morgan	111,064	124,028	9	10

THE UNIVERSITY OF ALABAMA CENTER FOR BUSINESS AND ECONOMIC RESEARCH

ALABAMA'S LARGEST COUNTIES 2010 vs 2040

Baldwin County is projected to become the **4TH LARGEST COUNTY IN ALABAMA BY 2040**

REAL ESTATE GROWTH



NEW HOUSING STARTS

2010	674
2011	717
2012	1,066
2013	1,213
2014	1,279
2015	1,408
2016	1,616



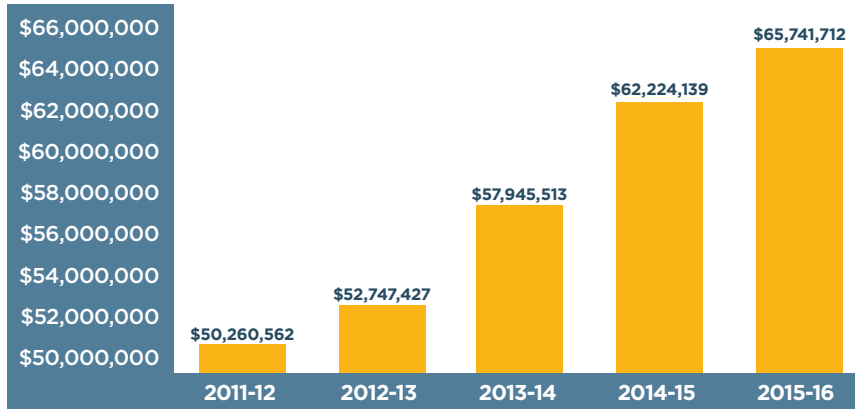
TOTAL RESIDENTIAL SALES

2010	3,090
2011	3,643
2012	3,835
2013	4,512
2014	4,669
2015	5,230
2016	5,571

- » Housing sales near pre-recession numbers
- » 15% growth in the number of new housing starts in 2016

ACRE

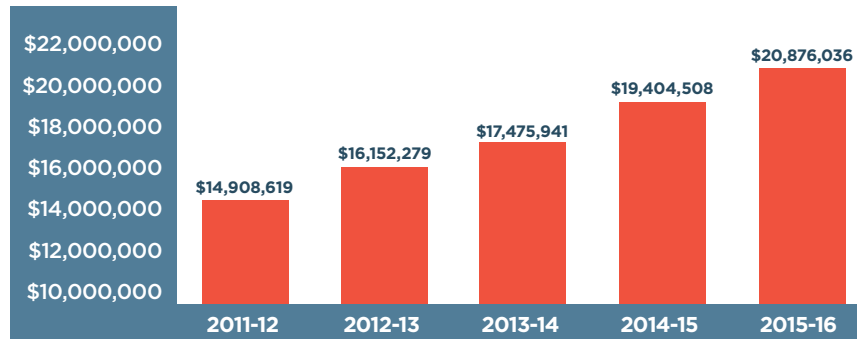
SALES TAX



» 31% increase in sales tax since 2012

AL. DEPT. OF REVENUE

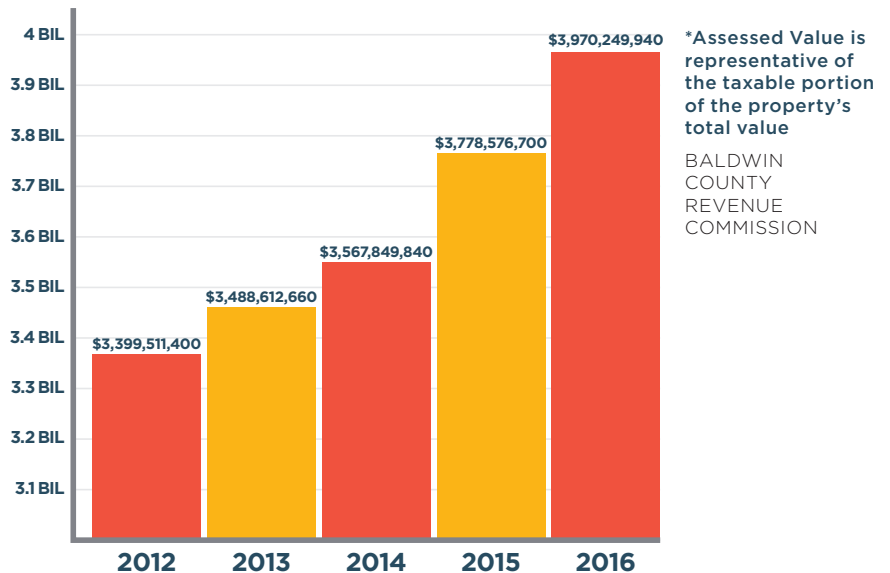
LODGING TAX



» 40% increase in lodging tax since 2012

AL. DEPT. OF REVENUE

TOTAL ASSESSED VALUE OF BALDWIN COUNTY PROPERTY*



» 16.8% increase in Baldwin County's total assessed property value from 2012 to 2016

» Baldwin County ranked #1 in the State of Alabama for Incoming Business Investment in 2016 Smart Asset