



## BALDWIN COUNTY INDUSTRY GROWTH

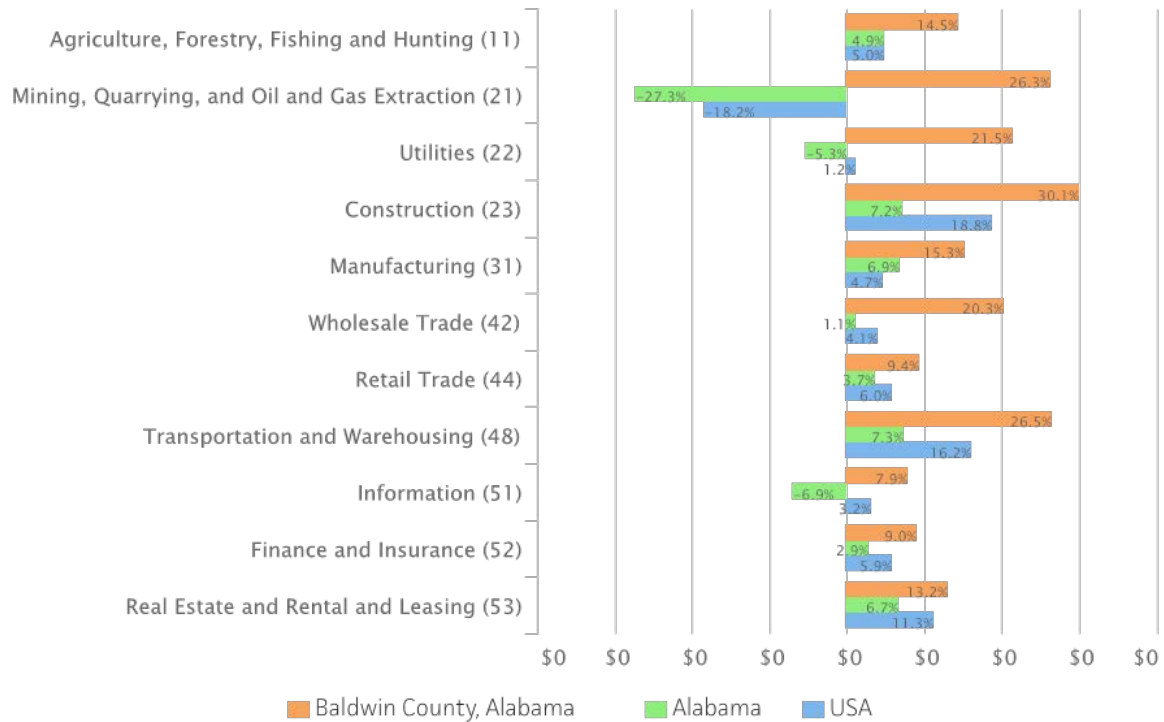
Industry	Baldwin County, Alabama (1003)			Alabama (1)			USA		
	5 Year % Change in Empl	Empl	Avg Ann Wages per Worker	5 Year % Change in Empl	Empl	Avg Ann Wages per Worker	5 Year % Change in Empl	Empl	Avg Ann Wages per Worker
Agriculture, Forestry, Fishing and Hunting (11)	14.5%	1,256	\$31,212	4.9%	30,301	\$32,322	5.0%	2,006,494	\$35,486
Mining, Quarrying, and Oil and Gas Extraction (21)	26.3%	87	\$58,711	-27.3%	6,090	\$72,552	-18.2%	662,234	\$98,679
Utilities (22)	21.5%	852	\$56,139	-5.3%	22,537	\$85,445	1.2%	818,929	\$94,410
Construction (23)	30.1%	5,293	\$46,595	7.2%	109,791	\$48,293	18.8%	8,384,185	\$56,248
Manufacturing (31)	15.3%	4,463	\$47,505	6.9%	267,965	\$54,431	4.7%	12,787,023	\$65,644
Wholesale Trade (42)	20.3%	1,927	\$58,876	1.1%	74,880	\$63,873	4.1%	6,027,965	\$74,608
Retail Trade (44)	9.4%	13,999	\$27,557	3.7%	239,913	\$28,006	6.0%	16,363,921	\$31,319
Transportation and Warehousing (48)	26.5%	2,115	\$48,676	7.3%	78,877	\$47,611	16.2%	6,613,854	\$53,430
Information (51)	7.9%	483	\$41,430	-6.9%	22,641	\$56,100	3.2%	3,045,557	\$98,901
Finance and Insurance (52)	9.0%	2,055	\$57,531	2.9%	74,493	\$72,243	5.9%	6,186,422	\$100,784
Real Estate and Rental and Leasing (53)	13.2%	2,431	\$39,536	6.7%	29,683	\$45,517	11.3%	2,635,974	\$57,043
Professional, Scientific, and Technical Services (54)	16.8%	2,696	\$57,614	8.4%	116,979	\$74,497	12.1%	10,352,492	\$90,261
Management of Companies and Enterprises (55)	4.7%	322	\$55,822	2.0%	16,693	\$100,028	12.1%	2,314,131	\$115,476
Administrative and Support and Waste Management and Remediation Services (56)	22.6%	3,681	\$27,233	12.1%	135,049	\$27,754	11.2%	9,760,642	\$38,541
Educational Services (61)	4.0%	5,586	\$39,139	-1.9%	165,178	\$44,879	3.8%	13,265,035	\$49,196
Health Care and Social Assistance (62)	26.5%	9,548	\$42,870	8.3%	279,068	\$47,602	11.0%	22,332,548	\$50,159
Arts, Entertainment, and Recreation (71)	60.2%	1,723	\$20,447	29.2%	25,936	\$20,299	11.5%	2,834,392	\$35,758
Accommodation and Food Services (72)	30.4%	13,387	\$19,933	13.7%	185,698	\$16,553	13.8%	13,626,463	\$21,227
Other Services (except Public Administration) (81)	9.3%	4,083	\$28,431	1.0%	100,937	\$27,587	5.4%	6,778,572	\$32,617
Public Administration (92)	4.6%	4,008	\$41,699	-1.9%	122,521	\$54,671	1.1%	7,234,523	\$63,398
<b>Total - All Industries</b>	<b>18.0%</b>	<b>79,996</b>	<b>\$35,501</b>	<b>5.4%</b>	<b>2,105,230</b>	<b>\$44,676</b>	<b>8.5%</b>	<b>154,255,082</b>	<b>\$53,893</b>

Source: JobsEQ®  
 Note: Figures may not sum due to rounding.  
 Data as of 2018Q1



5 Year % Change in Empl

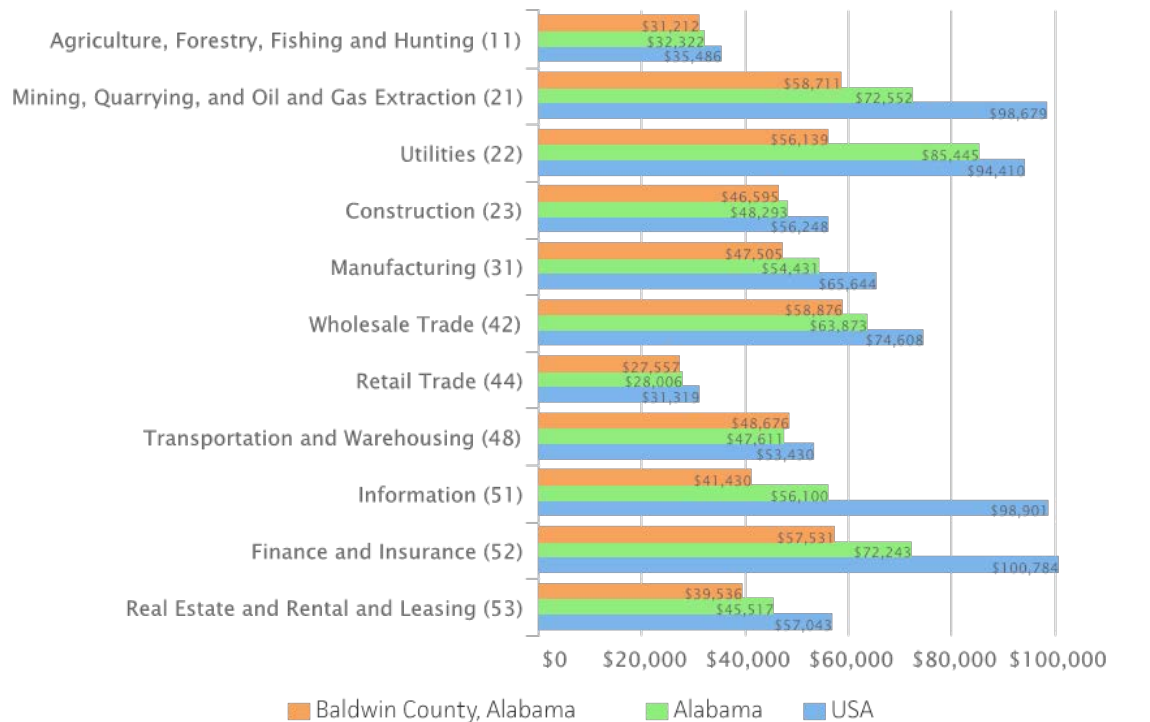
Total Employment, Latest Available Data



Source: JobsEQ® Note: Figures may not sum due to rounding. Data as of 2018Q1

Avg Ann Wages per Worker

Total Employment, Latest Available Data



Source: JobsEQ® Note: Figures may not sum due to rounding. Data as of 2018Q1